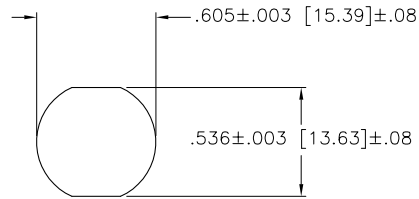
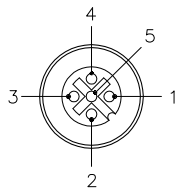


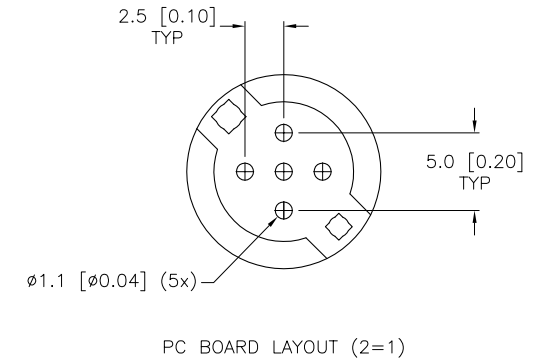
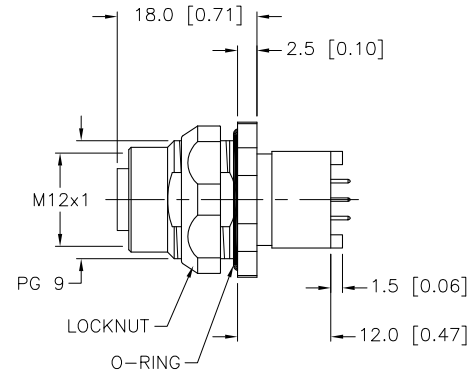
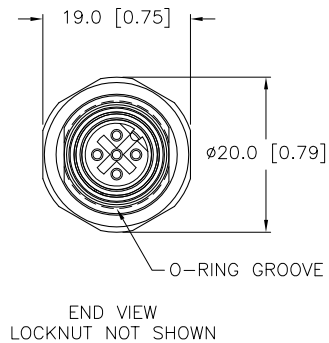
FEMALE END VIEW



MOUNTING HOLE

SPECIFICATIONS

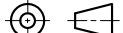
CONTACT CARRIER MATERIAL	NYLON OR TPU
CONTACT MATERIAL/PLATING	BRASS/GOLD
RATED CURRENT [A]	4.0 A
RATED VOLTAGE [V]	250 V
HOUSING/LOCKNUT MATERIAL	BRASS/NICKEL
NUMBER OF CONDUCTORS (AWG)	PCB PINS
TEMPERATURE RATING	-40°C to +80°C (-40°F to +176°F)
PROTECTION CLASS	MEETS NEMA 1,3,4,6P AND IEC IP68



SOURCE DRAWING - FOR REFERENCE ONLY

NOTES:

1. HEIGHT TOLERANCE BETWEEN THE PCB AND THE METAL HOUSING: UP TO 1 mm.

RELATED DOCUMENTS		3RD ANGLE PROJECTION		<div>THIS DRAWING IS CONFIDENTIAL AND THE PROPERTY OF TURCK INC. USE OF THIS DOCUMENT WITHOUT WRITTEN PERMISSION IS PROHIBITED.</div> <div>TURCK INC <i>High Technology Sensors and Automation Controls</i></div> <div>3000 CAMPUS DRIVE MINNEAPOLIS, MN 55441 1-800-544-7769 (763) 553-7300 (763) 553-0708 fax turck.com</div>	
1. 2. 3. 4.					
MATERIAL BRASS		DRFT RDS		DATE 09/13/11	DESCRIPTION FKFDH 4.5
		DSGN		SCALE 1=1.0	
FINISH NICKEL-PLATED		UNIT OF MEASUREMENT MILLIMETER [INCH]		IDENTIFICATION NO. E4506-50	
				REV A	
		DO NOT SCALE THIS DRAWING		FILE: E4506-50	
				SHEET 1 OF 1	

A	DRAWING RELEASE	RDS	09/13/11	
REV	DESCRIPTION	BY	DATE	ECO NO.